

Remote Switchable Power



Product:

DEV 5076 - Redundant Power Supply
-48 V DC, 8 * 2 A

Features:

- Powerful DC Supply in a small 19", 1 RU (45 mm) Housing
- Redundancy via two exchangeable Power Supply Modules
- Galvanic Isolation of the Output Terminals, providing selectable Polarity of the Output Voltage
- Current Monitoring and Switching Control for each of the 8 Outputs
 - via comfortable Web Interface and
 - via SNMP Remote Control Protocol Support

Application Areas:

- Satellite Ground Stations
- Cable Head End Stations

*Front DEV 5076**Rear DEV 5076*

The Situation

For power supply applications the market provides a number of suitable equipment with 48 V DC outputs.

But in professional applications there is the additional requirement for redundancy, modularity and a higher number of independently fused outputs.

Easy and remote switching capabilities and current monitoring for each output are further necessities.

All this should be combined in the smallest possible housing height for professional 19" rack equipment.

DEV worked out a Solution

The DEV 5076 chassis was developed for professional use and is equipped with exchangeable powerful and reliable power supply modules as a source for loads working on -48 V DC.

There are implemented convenient options for the surveillance and the control of the instrument.

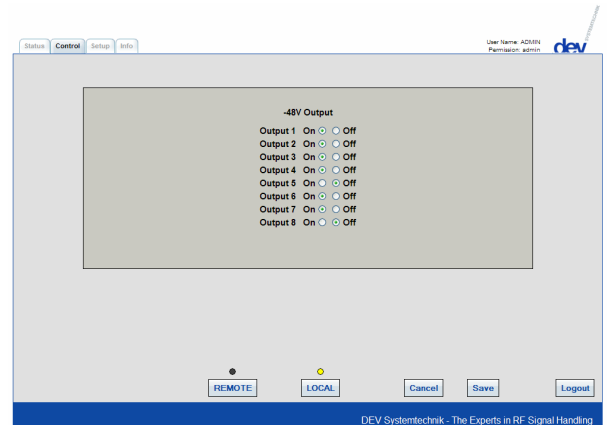
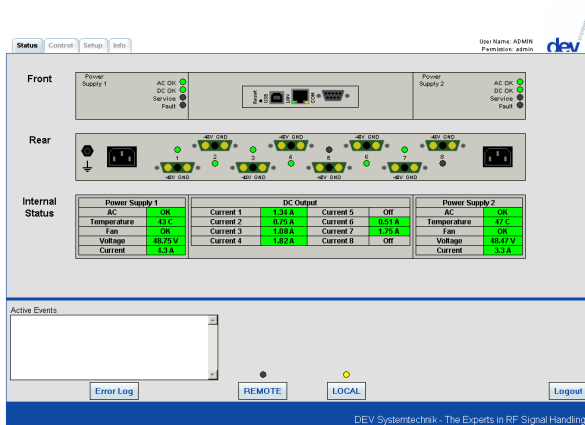
The Technical Concept

The DEV 5076 is a compact 1 RU chassis, holding two strong power supply modules.

Thus, there is enough redundant power for the supply of the eight -48 V DC output channels which are electronically fused to 2 A maximum. Monitoring and control of the instrument can be performed via an easy to operate Web Interface and via SNMP. This includes the individual switching and the current measurement for each of the eight output channels.

In addition to the Ethernet interface which is used for the communication via Web Interface and SNMP, the DEV 5076 provides a serial interface which can be used to configure the IP parameters of the instrument.

The DEV 5076 Web Interface



The Status Tab

The upper part of the Status Tab provides a symbolic view of the instrument from its front side and its rear side which is done to visualise the physical indicators on the instrument.

In the middle, the internal status is presented for the two power supply modules. The measured output current is shown for each of the eight channels as well. If a value exceeds well defined limits, the corresponding value field will turn from green to red.

In the lower part of the Status Tab new power errors and pending errors are shown in a small Active Events Window. To obtain more details on all errors, the **Error Log** button has to be operated. This will open a comprehensive window with all kinds of information.

The **REMOTE** button and the **LOCAL** button are installed to define whether the control of the instrument is performed via a remote M&C system using SNMP protocol or locally via the Web Interface. The current operation mode is indicated via the corresponding yellow indicator. A Web Interface session is finished by operating the **Logout** button.

The Control Tab

The Control Tab of the Web Interface provides means to turn on and off each of the eight outputs.

All changes within the Control Tab are applied, if the **Save** button is operated in Local Mode, to discard any changes possibly made, the **Cancel** button is to be actuated.

The functionality of the **REMOTE** button, the **LOCAL** button and the **Logout** button in the lower third of the Control Tab is identical to the functionality of the buttons in the Status Tab.

Technical Data

DEV 5076 Redundant Power Supply -48 V DC, 8 * 2 A

Remote Communication

Interfaces, connectors	Ethernet, RJ-45 serial interface RS 232 (optional RS 422/RS 485), Sub-D-9 (f)
Remote control & surveillance, interface	-via Web Interface, Ethernet; -via SNMP protocol, Ethernet.
IP configuration, interface	-via Web Interface, Ethernet; -via terminal (command line application), serial interface.

Redundant Power Supply

Number of power supply module slots	2
Primary voltage	85...264 V AC supplied by two different lines
Number of DC outputs, connectors	8, Sub-D-3W3 High Power (f)
Output voltage	-48 V DC or +48 V DC selectable (by reversing the connection to the output terminals)
Output current	max. 2 A per output (electronically fused), i.e. 16 A total max.
Power consumption	<850 VA , 3870 VA total max.

General Specifications

Housing	19" (483 mm), 1 RU (45 mm), 560 mm depth
Weight	~10 kg
Environmental conditions	ETS 300019 Part 1-3 Class 3.1

Order Information

DEV 5076	Redundant Power Supply -48 V DC, 8 * 2 A
Option 52	RS 422 instead of RS 232
Option 53	RS 485 instead of RS 232

Contact

DEV Systemtechnik GmbH & Co. KG
Grüner Weg 4A
D-61169 Friedberg
Tel.: +49 (0) 6031 18999-0
Fax: +49 (0) 6031 18999-15
E-Mail: info@dev-systemtechnik.com
URL: <http://www.dev-systemtechnik.com>

Rev. 13-JAN-2009